

An aerial photograph of the Plymouth State University campus in New Hampshire. The image shows a variety of brick and modern buildings, green lawns, and parking lots. In the background, there are rolling green hills and mountains under a clear blue sky. The text "See further up here." is overlaid in large white font on the left side of the image.

See further
up here.

Plymouth, New Hampshire

The logo for Plymouth State University, featuring a green wave-like graphic above the text "Plymouth State UNIVERSITY".

Plymouth State
UNIVERSITY

PSU AT A GLANCE

- **4000+** undergrad students & **2000+** graduate students
- **24** varsity athletic teams
- **96%** of students live on campus or within one mile
- **95%** of students receive financial aid
- A year after graduating, **99%** of alumni are employed or in grad school

A man and a woman are standing next to the Panther statue at Plymouth State University. The man is wearing a blue polo shirt and khaki shorts, and the woman is wearing a white tank top and denim shorts. They are both smiling. The Panther statue is a large, dark bronze sculpture of a panther in a pouncing pose, standing on a grey granite base. The base has the Plymouth State University logo and name. In the background, there are green trees, a blue flag, and a red brick building with arched windows.

Plymouth State
UNIVERSITY

WE'RE ON THE SAME TEAM

Doesn't it go by fast? It seems like only yesterday when you removed the bike training wheels, and now your child is headed to college. We get that. At Plymouth State, we understand that knowing where students are coming from helps them achieve their dreams.

We're a family of faculty and staff, parents and children, and alumni and friends, and would be proud to have you join us.

UNDERGRADUATE ACADEMIC MAJORS

Accounting	Computer Science	Geography	Public Health
Adventure Education	Criminal Justice	History	Public Management
Allied Health Services	Criminology	Information Technology	Social Science
Anthropology	Early Childhood Education	Interdisciplinary Studies	Social Studies Education (5-12)
Art	Electromechanical Technology & Robotics	Management	Social Work
Art (BFA)	Elementary Education	Marketing	Sociology
Art Education (K-12)	English	Mathematics	Spanish
Art History	Environmental Biology	Meteorology	Sports Management
Biochemistry	Environmental Planning	Music	Theatre Arts
Biology	Environmental Science & Policy	Music Education (K-12)	Tourism Management & Policy
Business Administration	Exercise & Sport Physiology	Nursing	Undecided
Cell & Molecular Biology	Finance	Philosophy	Youth Development & Education
Chemistry	French	Physical Education	
Communications Studies		Political Science	
Computational & Applied Mathematical Sciences		Psychology	

VISIT [PLYMOUTH.EDU/ACADEMICS](https://plymouth.edu/academics) FOR THE MOST CURRENT LISTING



LEARN MORE ABOUT OUR GRADUATE PROGRAMS INCLUDING THE NEW ONE-YEAR MBA

21 
AVERAGE CLASS SIZE

50+ 
MAJORS

60+ 
MINORS

7 
CLUSTERS

TOP 10%
OF INCOMING CLASS
ELIGIBLE FOR UNIVERSITY
HONORS PROGRAM

plymouth.edu/universityhonors

**"PSU IS THE #1
RANKED SCHOOL IN
THE COUNTRY FOR
CRITICAL THINKING
IMPROVEMENT."**

– Wall Street Journal, June 2017

**18:1 STUDENT-TO-
FACULTY RATIO**

CHOOSING THE RIGHT UNIVERSITY

Helping your child find the right university can be challenging. After all, you want a high-quality education that prepares them for the future, but it has to come at a reasonable cost.

We understand. That's why we developed our Integrated Clusters approach, one of the only programs of its kind. At PSU, your child receives the educational experience you'd expect from a small, private school, all at state school costs.

LET US HELP YOU

We know you have questions! That's why a dedicated Admissions Counselor is assigned to every PSU applicant. The sooner you establish a working relationship with your Admissions Counselor, the more guidance you will receive for your search. You can find yours online, or give our Admissions Office a call at **1-800-842-6900**.

An Admissions Counselor will:

- **Collaborate** with you to set educational goals and help you achieve them
- **Listen** to and **understand** your concerns, fears, and/or challenges, and help to **develop solutions**
- **Communicate** application requirements, deadlines, timelines, and information about our learning model
- **Connect** you with faculty, staff, and current students who can further assist you.



THE LOOP
PLYMOUTH STATE FAMILY PORTAL

The Loop is a new way to stay connected with your student and Plymouth State. The Loop provides access to important campus news and deadlines, personalized newsletters you can access on your schedule, announcements via e-mail, and the sharing of updates with friends and family.

For more information visit plymouth.edu/theloop.



A BOLD NEW APPROACH TO LEARNING

Our world moves fast, and most universities aren't keeping up. Globally, more people than ever are pursuing higher education. When choosing a university, you should be asking: how will this institution help my child stand out?

Plymouth State grads stand out from the crowd thanks to our Integrated Clusters approach. It's a new way of learning, designed for our ever-changing world.

PSU partners with local businesses, nonprofits, governments, and other organizations to discover the real challenges they're facing. Then we bring their challenge to our Open Labs, and bring together students from different majors to work on it. Through communication and collaboration, our students and faculty propose real solutions for our partner organizations.

With PSU's Clusters approach, students start applying their knowledge before they graduate—building confidence, connections, and a solid career foundation along the way.

Up here, academics get put into action.

THE PLYMOUTH STATE LEARNING MODEL

At Plymouth State, students actively learn with faculty and peers, not just within their major but from diverse disciplines and with partners such as businesses and organizations, gaining real-world, résumé-boosting experience. **The Plymouth State Learning Model gives students the critical thinking and collaboration skills prized by employers.**

HIGHER EDUCATION FOR TODAY'S JOB MARKET

Traditional Approaches

Learn about industry challenges through case study

Collaborate with classmates only in the same major

Develop academic knowledge and skills

VS

PSU's Cluster Approach

Learn about industry challenges by proposing solutions

Collaborate with classmates in many majors

Develop and apply academic knowledge and skills

Arts & Technologies

Education, Democracy & Social Change

Justice & Security

Innovation & Entrepreneurship

Health & Human Enrichment

Tourism, Environment & Sustainable Development

Exploration & Discovery

REAL-WORLD PROJECTS

Sustainability Study of Warren, New Hampshire

Students learned about the concept of sustainability—both in the classroom and in the field—by preparing a community resiliency assessment taking into consideration the past, present, and future of the town of Warren, NH.

Topics centered around:

Climate Forecast: Analyzed Warren’s current and future climate using climate change model data

Economic: Suggestions for building a more resilient economy

Flooding: Analyzed vulnerabilities, risks, and concerns

Infrastructure: Identified vulnerabilities and risks

Sense of Place: Determined what matters most to the people of Warren and what makes their home unique

Recreation and Conservation: Identified important community assets and vulnerabilities in these areas, which are essential to the “way of life” in Warren

Transportation and Food: Recommendations on these complex, but essential elements of community resiliency



WARREN, NH



Self-Directed Learning

After deciding as a class to work with a community that wanted a resiliency plan, students selected the town of Warren. The town and PSU collaborated on the study.



Client Meetings

Students traveled to Warren to acquire information, survey residents, and meet with the town administrator.



Positive Outcomes

Students worked on real-world issues while developing the skills employers desire, and the town of Warren gained valuable insights that are informing its planning priorities.



SOMETHING FOR EVERYONE!

Your child will find their fit, no matter their interests!

We have academic, athletic, community, and social activities to suit every style.



90+ student clubs, including Entrepreneurial Action, Gaming, Democracy Matters, and more!



The Outdoor Center provides FREE equipment rentals to students!



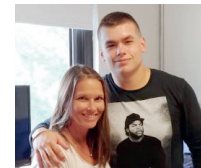
Tons of volunteer opportunities, like our signature Alternative Spring Break!

WE WORK FOR STUDENTS

At Plymouth State, we measure our success by the success of our students. It's our job to prepare your child to graduate as a leader in their chosen field, ready to step into a successful career—a job we are happy, and proud, to do!

AT PLYMOUTH STATE:

- All first-year students are paired with a **Student Success Coach** to help formulate social and academic goals in their first year.
- All undergraduate students have **access to free tutoring** each semester.
- **Career Development** helps students discover, develop, and distinguish themselves, beginning in their first year.



"My son's experience at PSU has been wonderful! From the Math Center to the Fitness Center, my son has everything he needs at Plymouth State to be successful. He has made some great friends, and is enjoying every minute!"

Shayna LoPriore



"The anticipation of sending our daughter to a college we were four hours away from was immediately replaced with a sense of being greeted by family members. PSU is a close-knit community where the commitment of the faculty and staff to nurture students exceeded all expectations."

Amy and Frank Muzio

SAFE AND SECURE

Plymouth State is a dynamic university, nestled in the vibrant small towns of Plymouth and Holderness, New Hampshire. The majority of our students live on campus, or within one mile.

We understand that you'll naturally have some concerns when your child first leaves home to attend university. That's why student safety is a top priority at Plymouth State, and there are university police officers protecting campus 24 hours a day, seven days a week.



SCHEDULE A VISIT
plymouth.edu/visit
(603) 535-2237



APPLY FOR ADMISSION
plymouth.edu/apply
admissions@plymouth.edu

COVERING THE COST

95% of PSU students receive some merit or need-based financial assistance.

First-year applicants are automatically considered for merit scholarships up to \$10,000 annually based on their high school GPA. In addition, PSU offers a wide variety of scholarships that assist in making a high-quality education affordable for every family.

For a full listing of opportunities, visit plymouth.edu/scholarships.



PSU'S NET PRICE CALCULATOR
go.plymouth.edu/calculator

PLYMOUTH STATE UNIVERSITY
FAFSA CODE: 002591

DON'T FORGET TO FILE YOUR FAFSA AT [FASFA.GOV.](https://fasfa.gov)

Have financial questions?

Contact the Student Financial Services Team
Phone: (603) 535-2338 or toll free: (877) 846-5755
E-mail: finaid@plymouth.edu
Web: plymouth.edu/financial-aid



Admissions, MSC 52 17 High Street Plymouth, NH 03264

NONPROFIT ORG.
US POSTAGE PAID
PERMIT NO. 2
PLYMOUTH NH